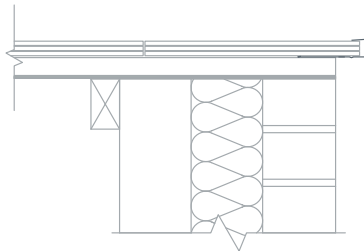


# Technical Datasheet C01/1G/1GT Slate Dry Verge

## Product Details

The Kytun Slate Dry Verge System permanently secures slate applications on gable ends protecting the verge from wind uplift and rain. The Slate Dry verge System can be used with both interlocking slates and double lap natural or fibre cement slates.

The components are manufactured from high grade pre-primed polyester coated aluminium, polyester coated galvanised steel & plastisol coated galvanised steel which produces textured finish.



## Product Features

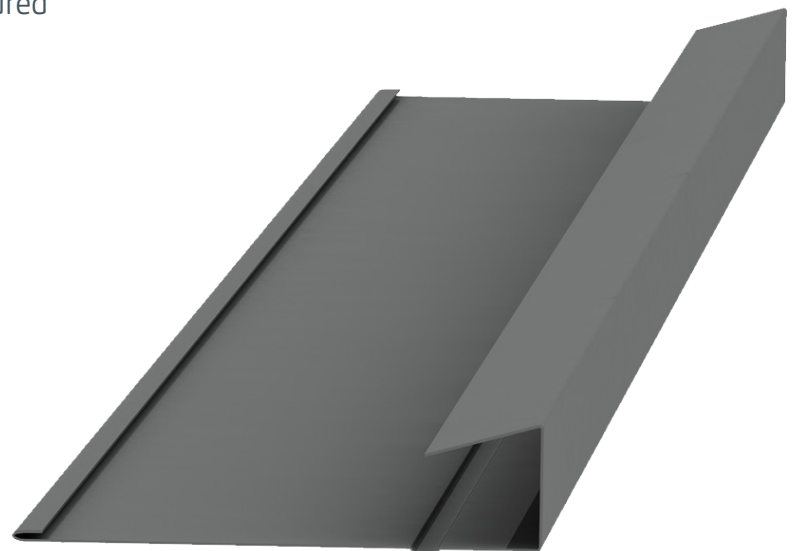
- Provides full wind uplift and rain protection.
- Patented 'Drip System' which allows for self drainage of rain water into the gutter.
- Extremely easy and quick to install.
- Requires no maintenance once installed.
- Can be fully customised.
- Extensive range of colours available.

## Dimensions

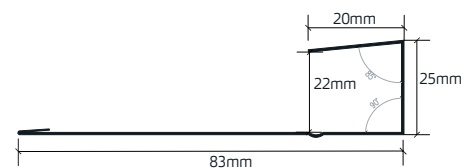
C01/1N Aluminium  
C01G/1NG Steel  
C01GT/1NGT Textured Steel  
Overall length: 2400mm

Code	Size	Colour	Pk Qty
C01	18mm x 3m	Blk • Blue/Blk • Brown	20
C01N	25mm x 3m	Blk • Blue/Blk • Brown	20
C01G	18mm x 3m	Blk • Blue/Blk	10
C01NG	25mm x 3m	Blk • Blue/Blk	10
C01GT	18mm x 3m	Blk • Blue/Blk	10
C01NGT	25mm x 3m	Blk • Blue/Blk	10

Aluminium Polyester Coated
  Galv. Steel Polyester Coated
  Galv. Steel Textured Plastisol Coated



4-5mm  
Fibre Cement Slate



6-8mm  
Natural Slate