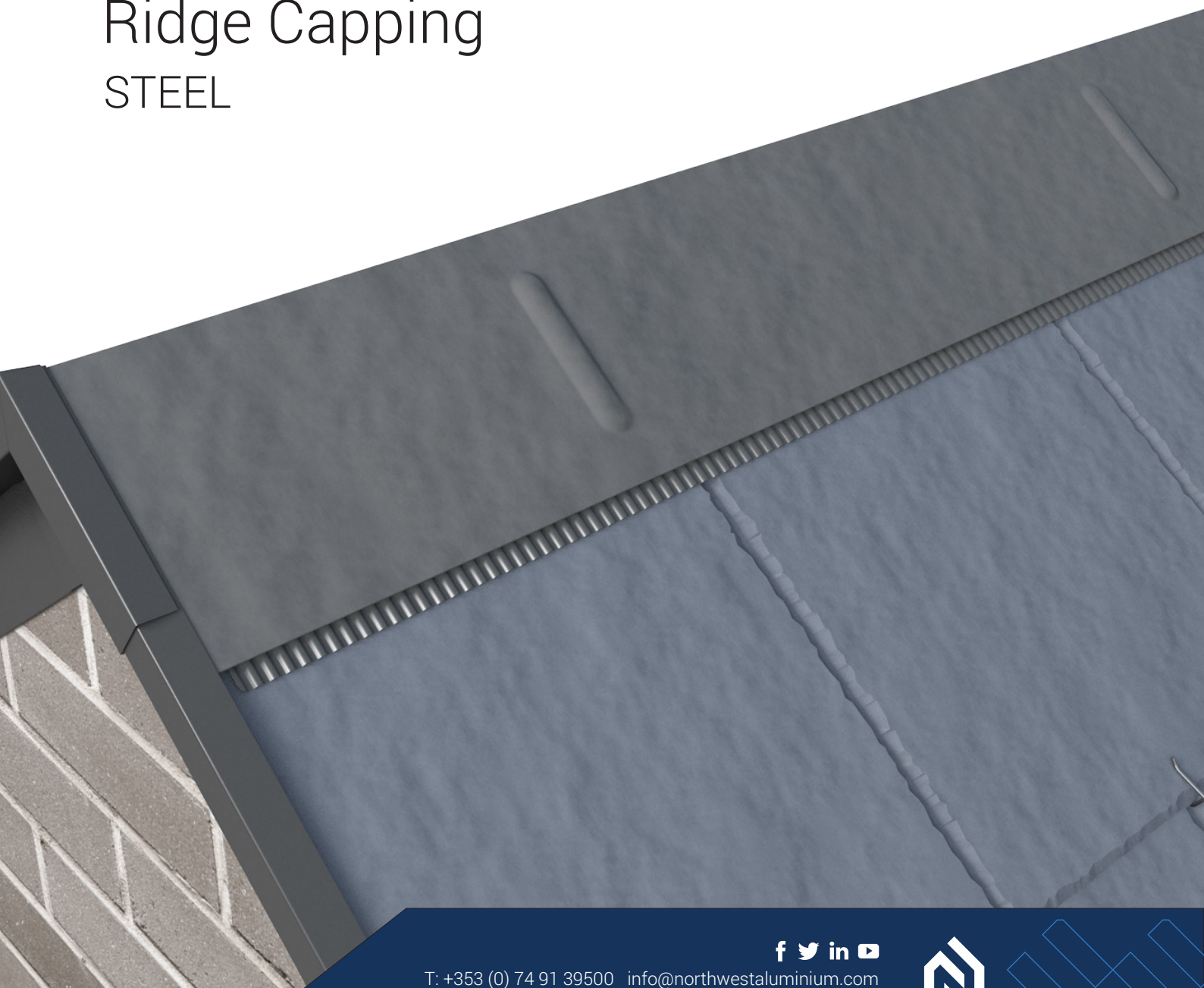




INSTALLATION GUIDE

Kytun™ KGR Steel Ridge Capping STEEL



T: +353 (0) 74 91 39500 info@northwestaluminium.com
www.northwestaluminium.com





INSTALLATION GUIDE

Kytun™ KGR Steel Ridge Capping

STEEL

Introduction

1.1 TECHNICAL DATA

Dimensions: 3m long/2.4m long x 143mm wide.

Material: Plastisol Coated Steel

Pitch Range: 30° – 60° Degrees

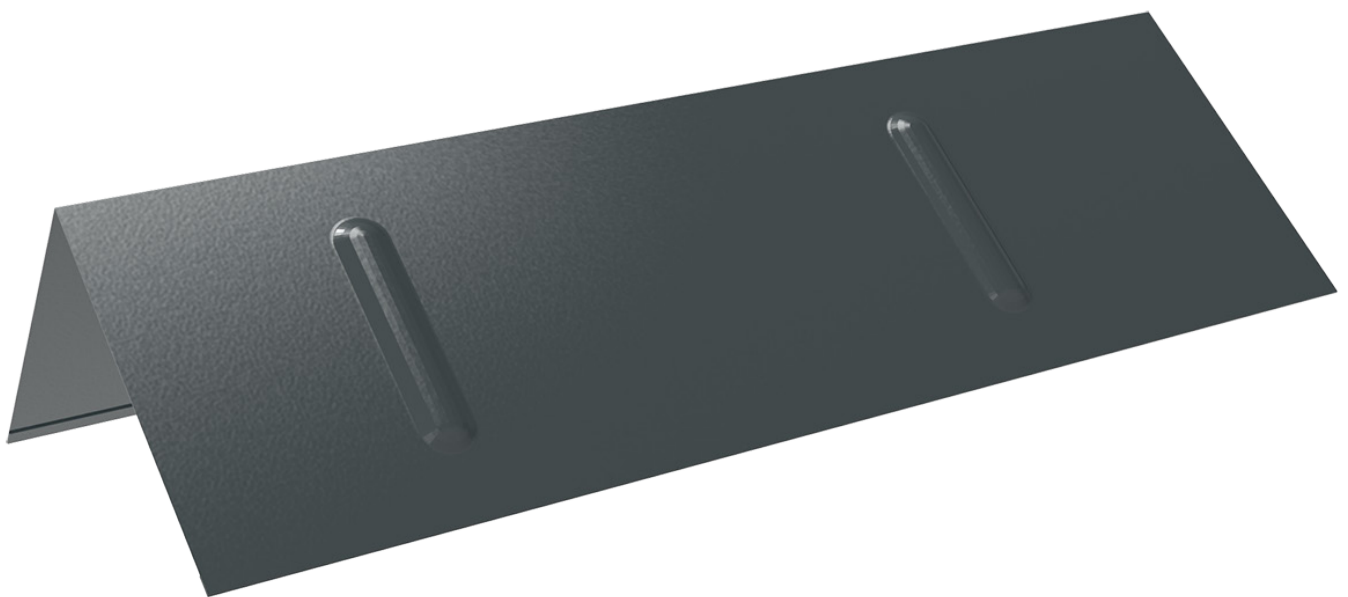
No sealing or jointing material is required although can be used. All Ridge Capping should be overlapped by 150mm minimum.

1.2 DESCRIPTION

The Kytun™ KGR Steel Ridge Capping provides a cost-effective alternative to traditional slate ridge detailing. The products are available for use with slate roofs. It provides a neat, maintenance free, lightweight and totally weatherproof finish to your roof.

1.3 STORAGE

The Kytun™ KGR Steel Ridge Capping should be stored on a raised platform, not resting on the ground, on a flat, clean and level surface. Crushing or distortion should be avoided by the manner in which the capping's are stacked. The profiles should be covered by a tarpaulin or waterproof sheet. Exposure to direct sunlight may cause distortion and colour leeching and should be avoided.



T: +353 (0) 74 91 39500 info@northwestaluminium.com
www.northwestaluminium.com





INSTALLATION GUIDE

Kytun™ KGR Steel Ridge Capping STEEL

Installation

2.1 GUIDANCE NOTES

Kytun™ KGR Steel Ridge Capping is used whenever you want use an alternative to Ridge tiles. Every site and project will be different but in general there are a number of important principles for the roofer.

It is important when fixing Kytun™ KGR Steel Ridge Capping that the roofing slates that meet at the ridge line on a level plane and have been installed in accordance with the manufacturers guide. Please ensure you follow the installation information provided by the slate supplier to ensure the slates are fixed correctly.

2.2 Kytun™ KGR Steel Ridge Capping INSTALLATION

General Procedure:

1. The roof should be completed with roof slate up to the ridge. The line for fixing of the Kytun™ KGR Steel Ridge Capping should be marked. Any problems or obstructions should be noted at this stage. The Ridge Roll should be in place at this stage (See figure 2).

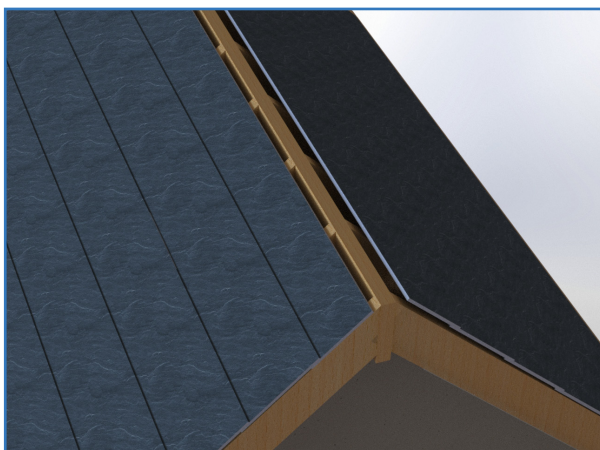


Figure 1. 3d View

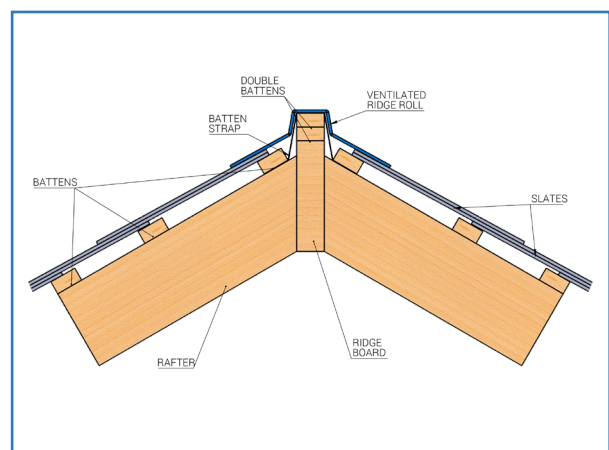


Figure 2. 2d View





INSTALLATION GUIDE

Kytun™ KGR Steel Ridge Capping

STEEL

2. Beginning at the side opposite the prevailing wind the first portion of Kytun™ KGR Steel Ridge Capping should be positioned in place. At this stage check across the ridge line for obstructions and plan the placement of lengths accordingly.

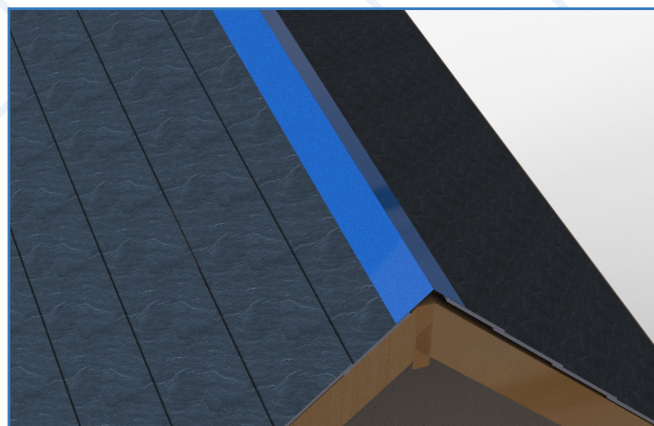


Figure 3. 3d View

3. When satisfied with the position the Kytun™ KGR Steel Ridge Capping the slates should be marked and pre-drilled at 600mm c/c. Using a 40-50mm Stainless Steel Screw with a flip over screw cap the KGR should be fixed into position. The Kytun™ KGR Steel Ridge Capping should be fixed approx 25mm from the outside of the piece.
4. Consecutive lengths of the Kytun™ KGR Steel Ridge Capping should be laid, allowing overlap at the joints of 150mm. Mastic can be applied at the overlap although it is not necessary. Care should be taken when placing the pieces onto previous piece. CAUTION: Sharp edges can cause cuts and scrapes, appropriate PPE should be worn. Continue in this manner if no obstructions present.
5. Where the Kytun™ KGR Steel Ridge Capping meets a chimney, ensure the lead flashing from the chimney laps over the edge of the Kytun™ KGR Steel Ridge Capping. Fix the Kytun™ KGR Steel Ridge Capping to the batten as close as possible to the lead flashing without puncturing it. This should ensure the Kytun™ KGR Steel Ridge Capping is adequately secured at the chimney.

