

# Kytun

## EBRINGTON HOTEL

CASE STUDY

COMMERCIAL





# EBRINGTON HOTEL

BUILDER  
Mc Kelvey Construction

ARCHITECTS  
RRP Architects

SECTOR  
Leisure

CASE STUDY

## The Challenge

The new £15m Ebrington Hotel in Derry City was designed by renowned RRP Architects. This demanding project required a unique vision and design that would enhance the character of the iconic existing buildings without being overshadowed by the more modern and contemporary new-build developments.

Kytun had the task of crafting a range of bespoke Architectural Aluminium products that matched visual impact with a contemporary look and feel, to emphasise the distinct building features.

Speed of manufacturing & professional Installation were of vital importance to our construction partners McKelvey Construction, and to meet the aesthetic requirements.



Our bespoke components complimented and enhanced the specification of the grey Architectural Aluminium Standing Seam system, delivering a strong visual impact whilst aligning with the features and vision designed by the architect.

**Matt Mc Andry,**  
Technical Manager at Kytun

[kytun.com](https://kytun.com)

PRODUCTS SUPPLIED:  
Aluminium Standing Seam  
Bespoke Flashings



## The Solution

### Kytun Aluminium Rainwater System & Architectural Aluminium

The material selection was crucial in achieving the finished look for the overall project. The Kytun technical team specified Aluminium Standing Seam in a light zinc grey colour due to its aesthetic appeal and product guarantees.

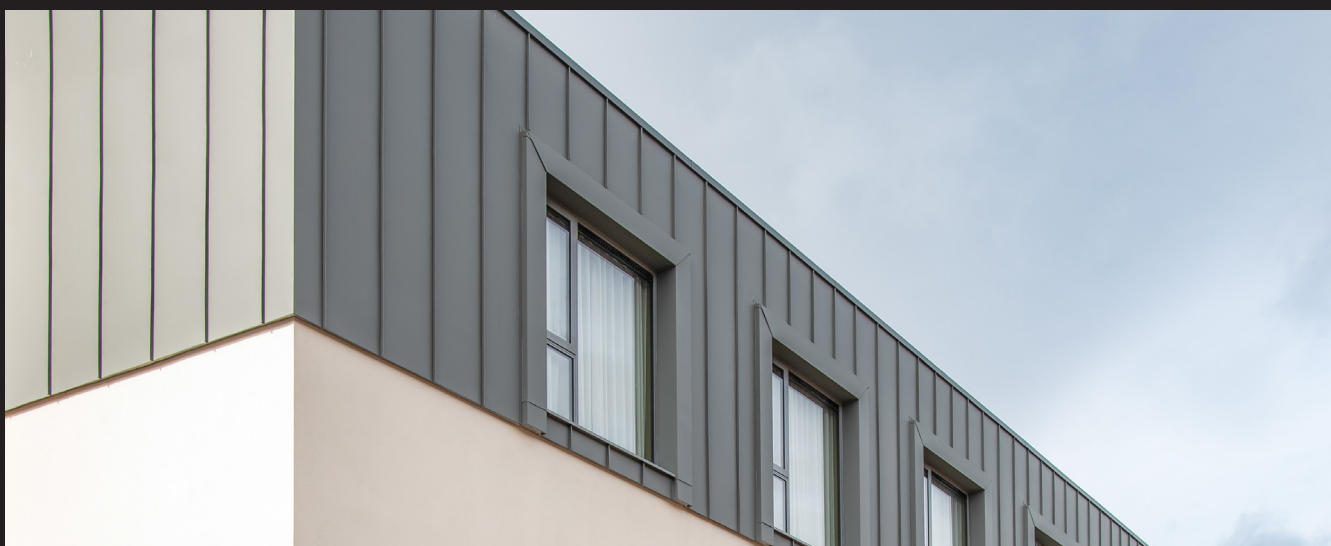
The Kytun team undertook full installation across the project, which had to be precise, working with components which were fabricated both in the factory and on-site. These included Window Flashings, Ridge Capping, Raised Reveals, Eaves, and Verge, all meticulously applied to achieve a unified application throughout.

The resulting Kytun Architectural Aluminium Standing Seam system delivers high visual impact whilst ensuring minimal maintenance requirements and a long service life. The existing buildings are elements are complimented with a modern style. Darren McKelvey of McKelvey Construction commented,

*“The team at Kytun were easy to work with on this project. They offered on-site measurements & scheduling service prior to production with defined lead times for product manufacture and delivery. They also provided a supply and fit solution which was a great benefit to us as main contractors.”*







# Kytun

Kytun  
IRL Office, Tawney, Kilmacrenan,  
Co. Donegal, Ireland, F92 DW64

T: +353 (0)74 91 39500  
E: [info@kytun.com](mailto:info@kytun.com)

Aluminium  
Rainwater Systems

Architectural  
Aluminium

Dry Fix  
Roofing Systems

Pitched Roof  
Ventilation