

TECHNICAL DATASHEET

# C02P/NP/LP SLATE DRY VERGE



The Kytun™ Slate Dry Verge System Type 2 System secures slate applications on gable ends permanently protecting the verge from the elements especially wind uplift and rain.

The design helps protect the edge of the roof from the elements and eliminates the possibility of lifting and damage to the roof underlay. No mortar or timber guides are required. The components are manufactured from high durability extruded UV inhibited PVC-u.





## TECHNICAL DATASHEET

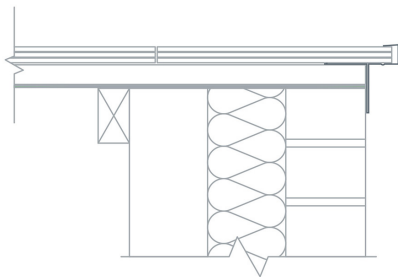
# C02P/NP/LP SLATE DRY VERGE

## Product Details

The Kytun™ Slate Dry Verge System permanently secures slate applications on gable ends protecting the verge from wind uplift and rain.

The Slate Dry verge System can be used with both interlocking slates and double lap natural or fibre cement slates.

The components are manufactured from high durability extruded and injection moulded UV inhibited PVC-U.



## Product Features

- Provides full wind uplift and rain protection.
- Patented 'Drip System' which allows for self drainage of rain water into the gutter.
- Extremely easy and quick to install.
- Requires no maintenance once installed.



## Dimensions

### C02P/C02NP/C02LP Slate Trim Type 2 uPVC

Overall length: 2400mm/3000mm

| Code  | Size           | Colour | Pk Qty |
|-------|----------------|--------|--------|
| C02P  | 18mm x 2.4m/3m | Blk    | 8      |
| C02NP | 25mm x 2.4m/3m | Blk    | 8      |
| C02LP | 32mm x 2.4m/3m | Blk    | 8      |

